

GENERAL SAFETY REMINDERS

- ⇒ All employees shall comply with OSHA, BOCA, and Georgia Tech policies and procedures when performing plumbing work.
- ⇒ Inspect equipment and tools for safety hazards before each use.
- ⇒ All hand and power tools shall be handled in a safe manner.
- ⇒ Proper personal protective equipment is to be worn at all times. Some particular instances include:
 - Eye protection shall be worn when using tools, chemicals, or when working in areas where foreign matter may enter the eyes.
 - Ear protection shall be used when entering areas of unsafe noise levels or when near equipment producing unsafe noise levels.
- ⇒ Do not work on live steam lines or hot water lines before securing cutoff valves. Follow Georgia Tech EHS Lock-out/Tagout and Confined Space procedures.
- ⇒ When not in use, all flammable materials must be stored in a Flammable Storage Cabinet.
- ⇒ Care shall be taken when filling equipment with fuels by turning equipment off and letting it cool before refueling. Fuels shall be stored in approved containers.



GENERAL SAFETY REMINDERS

- ⇒ Know where the Materials Safety Data Sheet (MSDS) book is kept and how to read an MSDS.
- ⇒ Check labels of all chemicals and MSDS's for ingredients, hazards, protective procedures, and PPE required.
- ⇒ Precautions shall be taken to avoid inhaling dangerous vapors by using proper ventilation and/or properly fitted respirators.



- ⇒ Use fall protection and other precautions when working at heights.
- ⇒ Use of ladders shall comply with the appropriate Georgia Tech EHS guidelines.
- ⇒ Keep work areas clear of clutter and equipment.
- ⇒ Learn and use safe lifting techniques.
- ⇒ Report all incidents to your supervisor immediately.

GEORGIA TECH EHS GENERAL SAFETY CONTACTS:

ALEECE FOXX - SAFETY MANAGER

(404) 385-0263



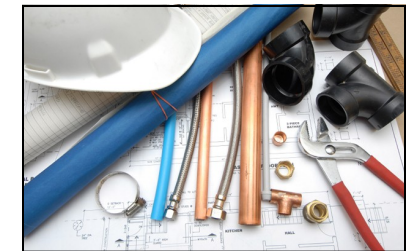
SAFETY BROCHURE

Plumbing Safety Guide

HEALTH AND SAFETY
HAZARDS

PLUMBING EQUIPMENT
SAFETY

GENERAL SAFETY
REMINDERS



Environmental Health & Safety (EHS)
490 10th St., 3rd Floor
Atlanta, GA 30318-0465

Phone: (404) 894-4635

Fax: (404) 894-5042

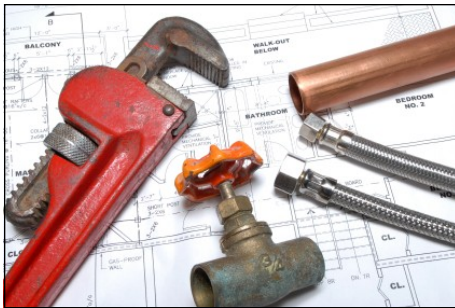
Website: www.ehs.gatech.edu

24-Hour Emergency Contact Number
(404) 216-5237

HEALTH AND SAFETY HAZARDS

Plumbers work in a variety of settings, some of which are hazardous. Some of the main occupational hazards include:

- Exposure to lead, adhesives, solvents, solder, sulphur dioxide, and other toxic or carcinogenic substances
- Proximity to flammable or combustible materials
- Working in awkward positions, or performing awkward manual tasks
- Lifting heavy objects
- Exposure to extreme temperatures - burns from steam or hot water
- Working in confined spaces
- Working at heights
- Risk of eye injury from flying particles
- Slips, trips, and falls
- Working with a variety of specialized tools



PLUMBING EQUIPMENT SAFETY

⇒ Welding Equipment

- Welding equipment shall only be used by trained employees.
- Welding shall be performed in designated areas.
- Areas shall be free of flammables and properly ventilated.
- Appropriate PPE shall be worn.
- Contact EHS Fire Safety and complete a Hot Work Permit before cutting, blazing, or welding.



⇒ Bench Grinders and Hand Grinders

- Should be adjusted to manufacturer's specifications with the proper safety guards in place.
- Inspect grinding wheels for cracks and damage before use.
- If damaged, **DO NOT USE** until replaced.
- Avoid breathing dust from grinding by wearing a facemask or properly fitted respirator.
- **DO NOT** operate bench grinders or hand grinders unless trained to do so.



PLUMBING EQUIPMENT SAFETY

⇒ Electrical Equipment

- Never work with electrical equipment while in water or if equipment is wet.
- All lights, extension cords, electric tools, or any equipment shall have a ground pin in good condition on the plug. **DO NOT** use the item if the ground pin is missing or broken.
- Inspect all electric cords and plugs for cracks in the insulation or exposed wires, or missing/broken pins before each use. Damaged equipment must be repaired or replaced.

⇒ Sewer Cables (Plumber's Snake)

- Only trained employees shall work with sewer cables.
- Proper PPE shall be worn when working with sewer cables.
- **DO NOT** wear loose clothing or jewelry that may become entangled and cause injury.



⇒ Steam Equipment and Piping

- Only trained employees shall work on steam equipment or piping.
- Georgia Tech EHS Confined Space and Lockout/Tagout procedures shall be followed.
- Proper PPE shall be worn.